



Data Informed Futures

Knowledge and insights to transform children's lives.

Data Informed Futures is a national initiative of UCLA's Center for Healthier Children, Families & Communities. We offer unique, neighborhood-level data and mapping about the well-being of children throughout the course of their lives. These findings reveal geographic patterns of disparity and resilience in distinct communities. These holistic data, along with our team's expert coaching and facilitation of a national learning network, enable community leaders and partners to advocate for meaningful changes.

Since 2009, the Futures Team has partnered with over 90 communities in 18 states using the Early Development Instrument (EDI) for children from 4-6 years old. Now we've expanded our measurement system to the next level, helping community partners to monitor children's development across their lifespan and to develop policies and practices that help children reach their full potential.



The search for equity is guided by data.

Innovative, holistic and predictive, our advanced suite of four measures assess well-being and community context over the course of children's lives.

Early life experiences (0-5 years): Using the *Childhood Experiences Questionnaire (CHEQⁱ)*, parents provide important contextual information about children's early experiences prior to kindergarten.

Children's Development (4-6 years): Using the *Early Development Instrument (EDIⁱⁱ)*, kindergarten teachers assess children's developmental outcomes in five areas known to predict later academic success (communication skills, language & cognitive skills, physical health & well-being, and emotional maturity).

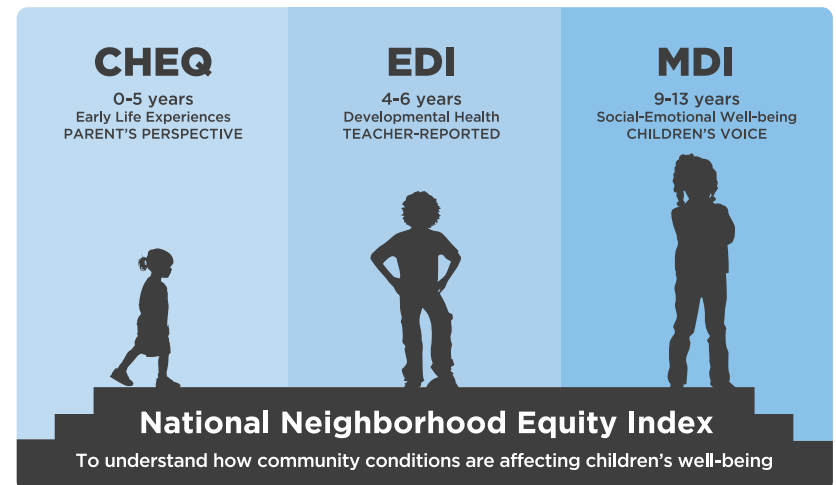
Middle Childhood – Their own voice (9-13 years): Using the *Middle Years Development Instrument (MDIⁱ)*, students share their thoughts and experiences inside and outside of school, providing important information about their social and emotional well-being.

Community factors contributing to well-being: The *National Neighborhood Equity Index (NNEIⁱⁱⁱ)* is a composite of 11 census indicators about social, educational and economic equity challenges. When used in combination with the EDI and MDI, the NNEI helps explain some of the factors contributing to children's outcomes and can also identify neighborhoods where children are doing relatively well despite these challenges.

Whole Child Equity Measurement System

"We want every child to reach their full potential. The EDI data really help us figure out root causes of the outcomes we are seeing and where, in our state, we can make additional investments."

Angela Duran
Campaign Director
Arkansas Campaign for
Grade-Level Reading



Creating a roadmap for local action.

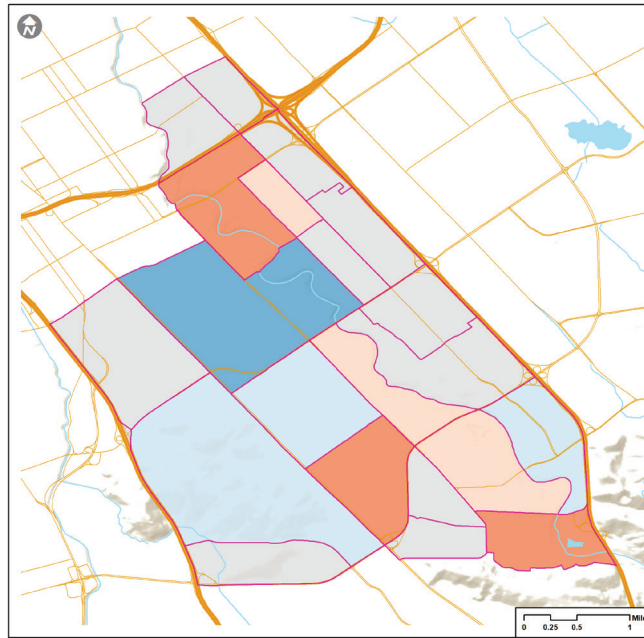
Our interactive maps help identify precisely how well service systems are able to support specific neighborhoods and the children and families that live in them.

To explore these maps for communities across the US, please email us at DataInformedFutures@mednet.ucla.edu.

To help communities use data to improve outcomes, Data Informed Futures provides technical assistance and hosts a national learning network.

Our highly accessible team of experts has extensive experience in helping partners translate data into knowledge, insights and action. With our one-on-one coaching, communities can effectively tell their own stories about what factors are driving outcomes and build a roadmap for local action.

The hosted, national learning network meets regularly, and has over 40 active member communities sharing and learning about best practices for using the data. Members share what's



“The data provide a tremendous benefit to communities across our county. The variety of data from every developmental domain help us move from general ideas of improving children’s well-being to really targeted conversations about specific areas and local geographies, reinforcing that this is not a one-size-fits-all approach.”

*Beth Thompson
Director of Data Management
Spartanburg Academic Movement, South Carolina*

working and what isn't, while collectively exploring and testing new ideas and innovations. This learning space fosters connections across communities and supports local leaders to effectively use the neighborhood maps to spark conversations about the inequities that exist, amplify community voices and develop a roadmap to improve the lives of all children in their community.

Data that drive new opportunities for disruptive change.

As revealing as our findings are, what's critical is how our partners use them to create new and powerful narratives that facilitate change. Communities have found that Data Informed Futures helps them to:

- Compare the strengths and weaknesses in children's development and school readiness across communities and development areas.
- Understand the relationship between children's EDI, MDI results and other factors that may influence their health and well-being, such as poverty rates, and availability of community assets like preschools, libraries, and health providers.
- Create a shared understanding of the barriers children in a community are facing.
- Use data to ensure interventions and resource investments are inclusive, participatory and effective.

To learn more about how Data Informed Futures can support local efforts to build a world where children reach their full potential, please email us at DataInformedFutures@mednet.ucla.edu.



healthychild.ucla.edu/datainformedfutures

ⁱ CHEQ and the MDI are the Copyright of the University of British Columbia, Human Early Learning Partnership

ⁱⁱ EDI is the Copyright of McMaster University Offord Centre for Child Studies

ⁱⁱⁱ The NNEI was developed by Dr. Charles Bruner and the Child and Family Policy Center